

Humberside Police Authority Precept Leaflet Questionnaire

Overall Results July 2004

CONTENTS

Introduction.....	5
Area lived in	7
Type of area.....	7

ANALYSIS BY URBAN/RURAL

Priority given to different issues (average ranking out of 10)	11
Priority given to burglary (ranking out of 10)	12
Priority given to speeding (ranking out of 10).....	12
Priority given to drug dealing (ranking out of 10).....	13
Priority given to violent crime (ranking out of 10)	13
Priority given to theft/shoplifting (ranking out of 10)	14
Priority given to car crime (ranking out of 10).....	14
Priority given to drink driving (ranking out of 10).....	15
Priority given to drug taking (ranking out of 10).....	15
Priority given to vandalism/graffiti (ranking out of 10).....	16
Priority given to neighbourhood disputes (ranking out of 10)	16
How would you say the level of crime has changed in your area over the last year? ...	17
Do you think Humberside Police are meeting your needs?	17
Please add any other comments you wish to make	18

ANALYSIS BY DIVISION

Priority given to different issues (average ranking out of 10)	21
Priority given to burglary (ranking out of 10)	23
Priority given to speeding (ranking out of 10).....	23
Priority given to drug dealing (ranking out of 10).....	24
Priority given to violent crime (ranking out of 10)	24
Priority given to theft/shoplifting (ranking out of 10)	25
Priority given to car crime (ranking out of 10).....	25
Priority given to drink driving (ranking out of 10).....	26
Priority given to drug taking (ranking out of 10).....	26
Priority given to vandalism/graffiti (ranking out of 10).....	27
Priority given to neighbourhood disputes (ranking out of 10)	27
How would you say the level of crime has changed in your area over the last year? ...	28
Do you think Humberside Police are meeting your needs?	28
Please add any other comments you wish to make	29

Introduction

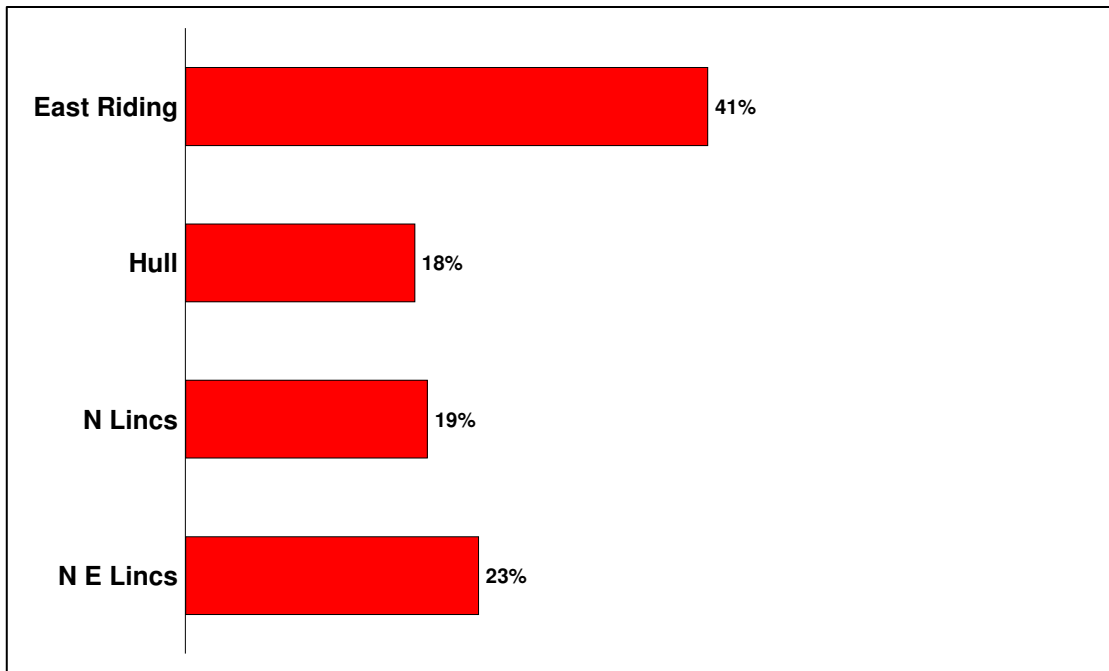
A precept leaflet including a short questionnaire about policing was sent to every household in Humberside with their Council Tax statements in early 2004. Humberside Police Authority received a total of 1,663 completed questionnaires, and commissioned Snap SurveyShop to carry out data entry and analysis of the results.

The breakdown of response by division and area type was as follows:

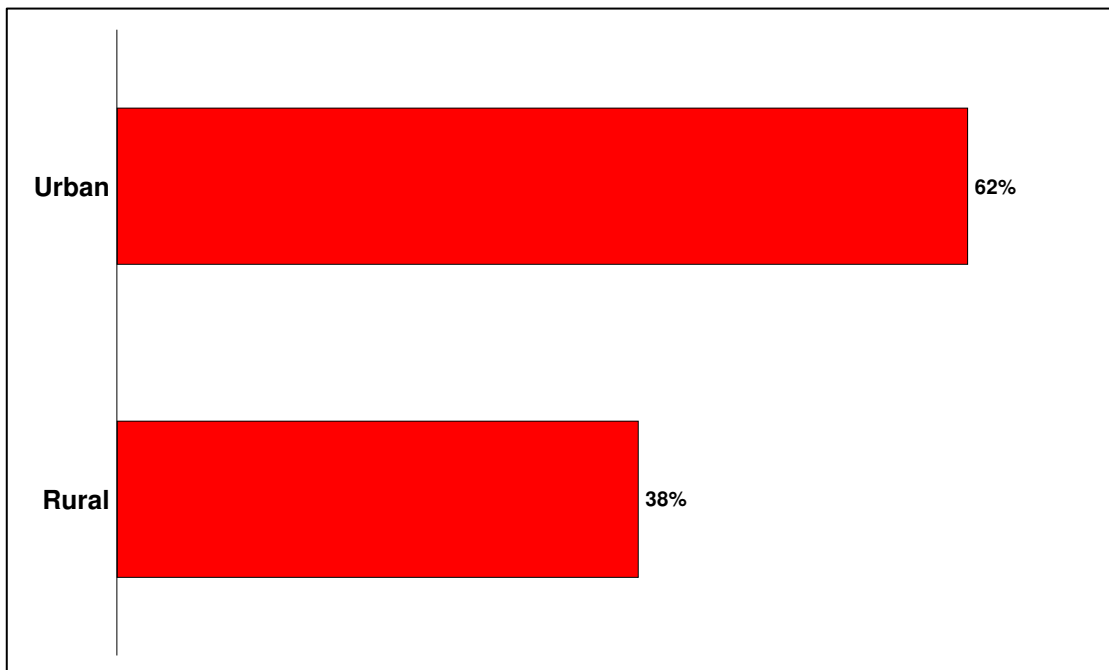
	Urban	Rural	Area type not known	TOTAL
East Riding	297	325	62	684
Hull	243	12	38	293
N Lincolnshire	129	154	24	307
NE Lincolnshire	252	72	49	373
Division not known	-	3	3	6
TOTAL	921	566	176	1,663

This report contains charts of data from all four divisions combined, analysed firstly by area type (urban/rural) and secondly by division.

Area lived in



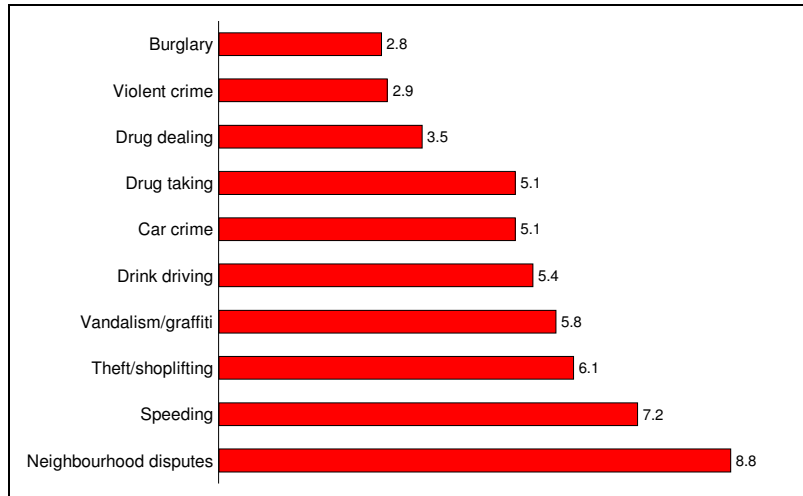
Type of area



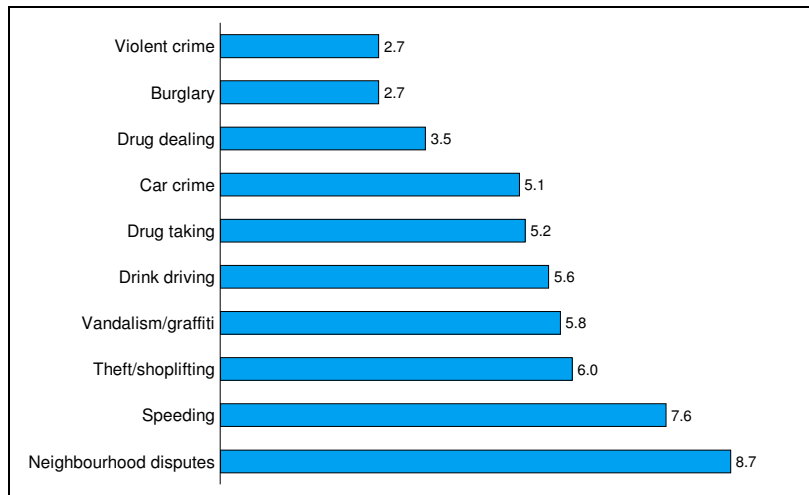
Analysis by Urban/Rural

**Priority given to different issues: average ranking out of 10
(1 = most important, 10 = least important)**

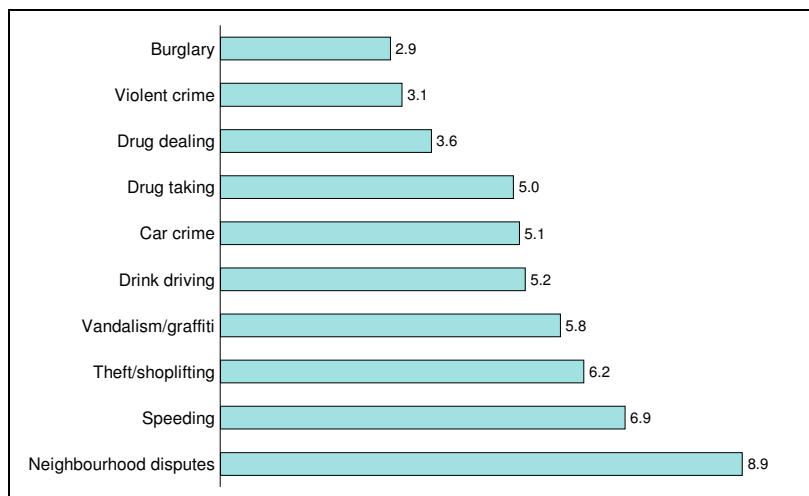
Total:



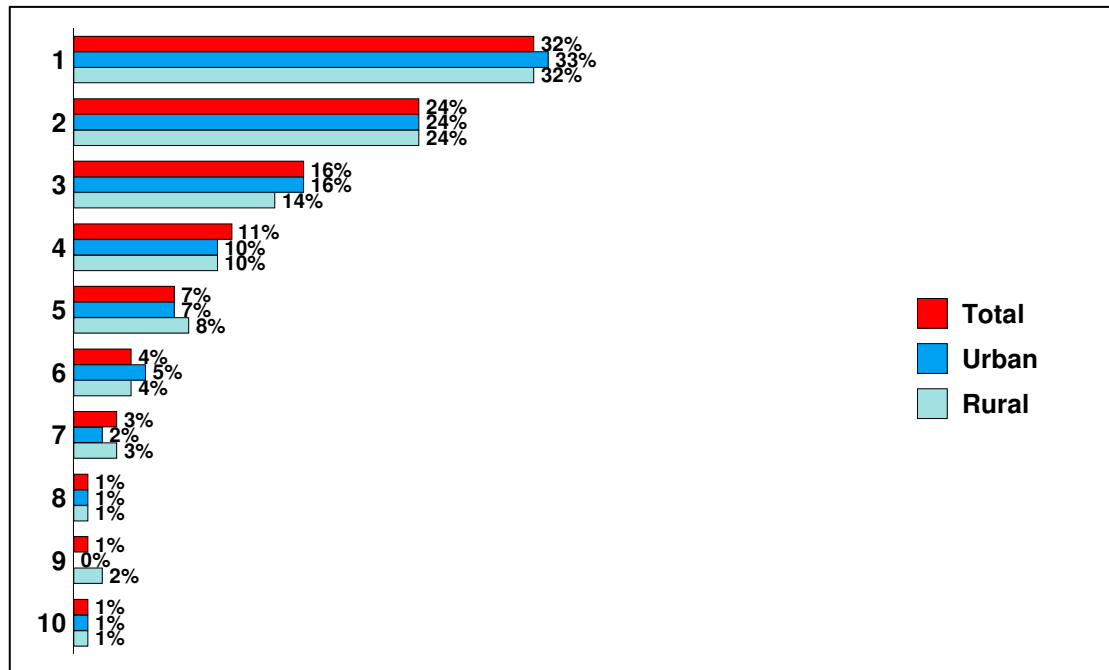
Urban:



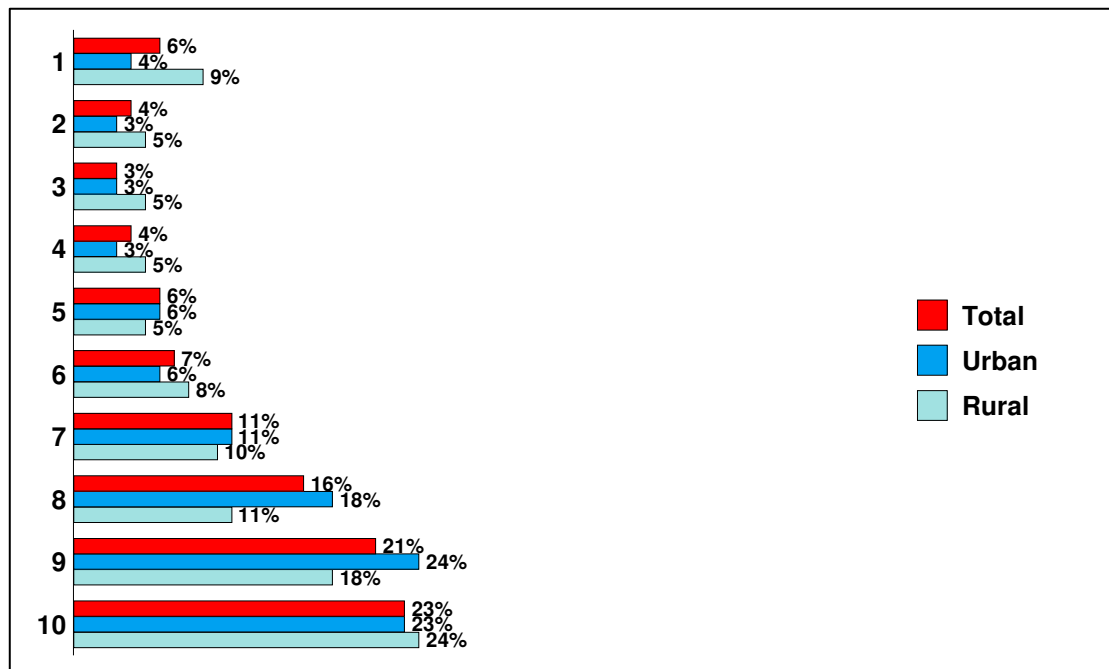
Rural:



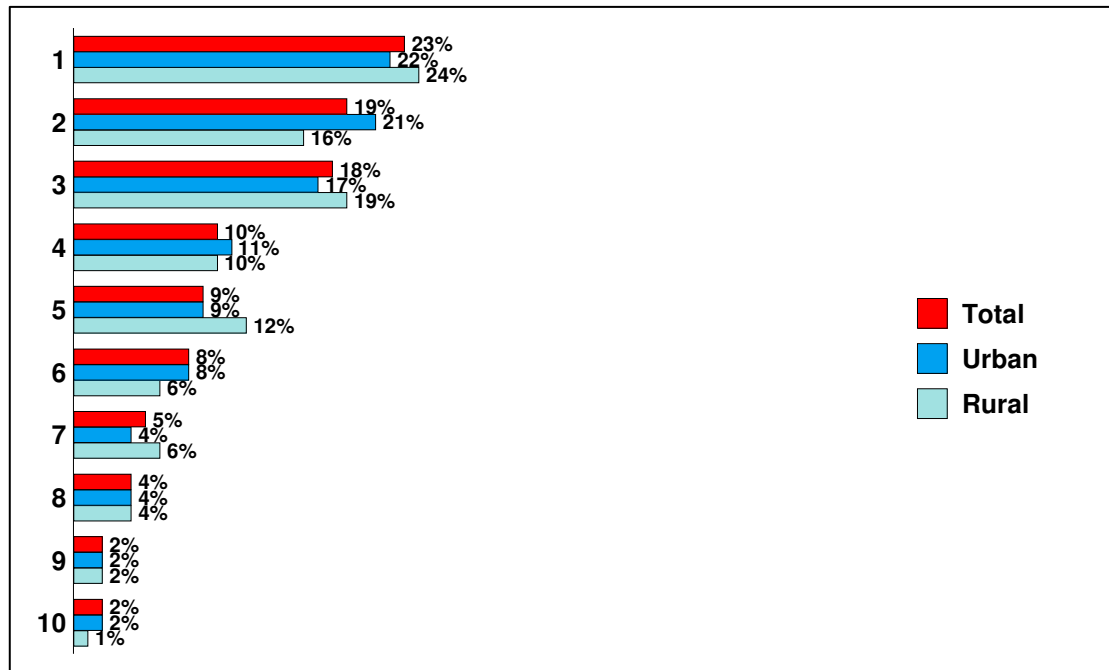
Priority given to burglary: average ranking out of 10
(1 = most important, 10 = least important)



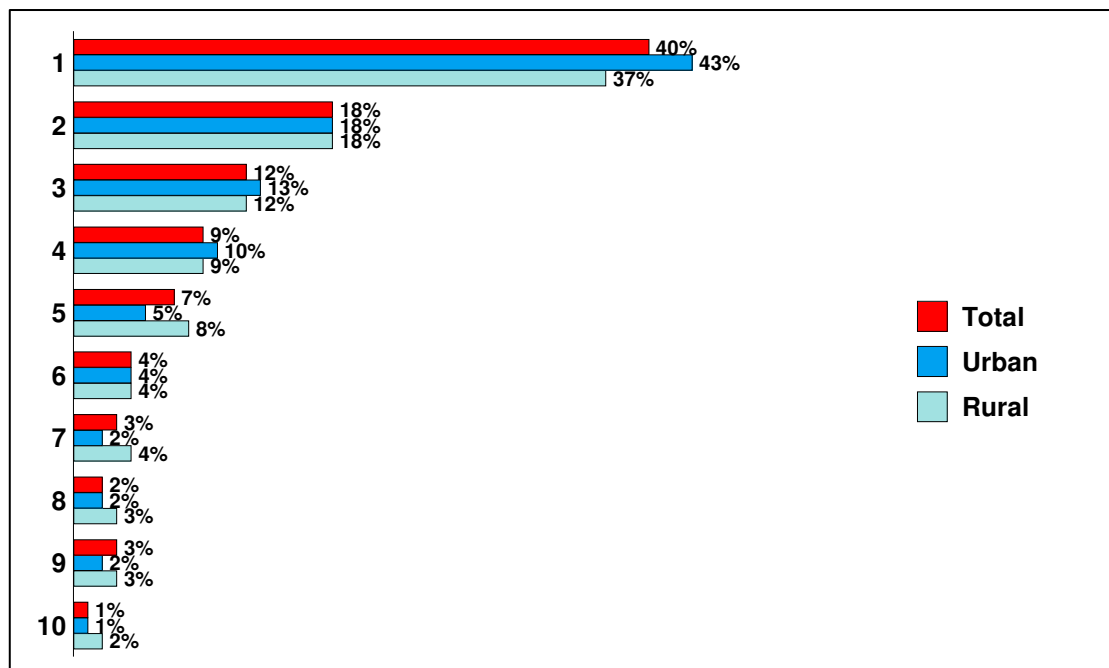
Priority given to speeding: average ranking out of 10
(1 = most important, 10 = least important)



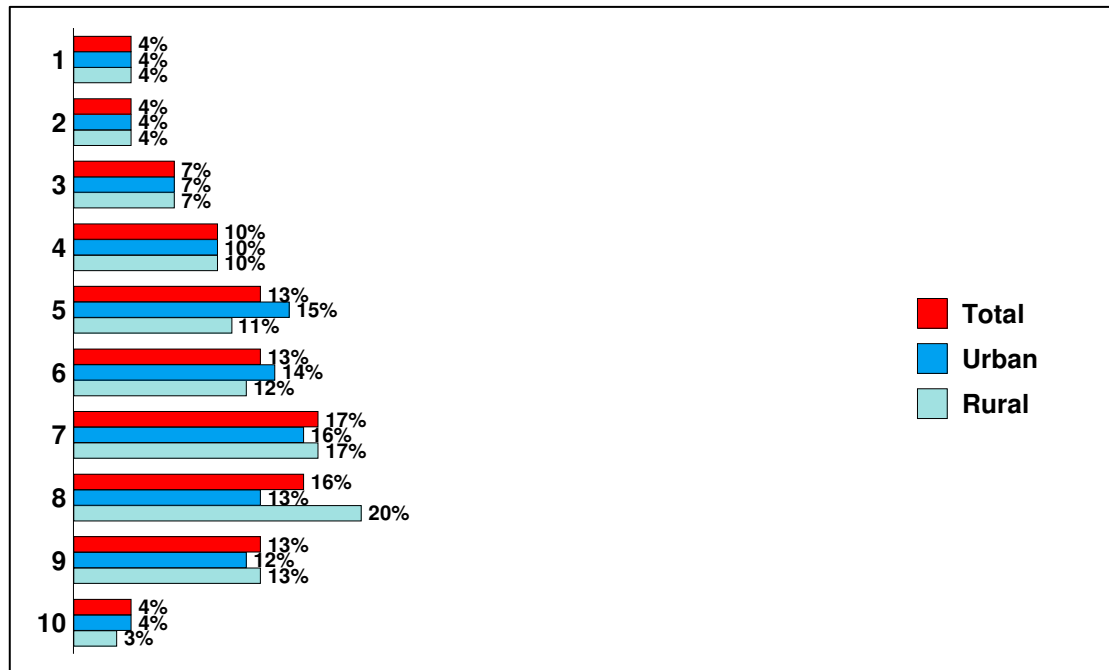
Priority given to drug dealing: average ranking out of 10
(1 = most important, 10 = least important)



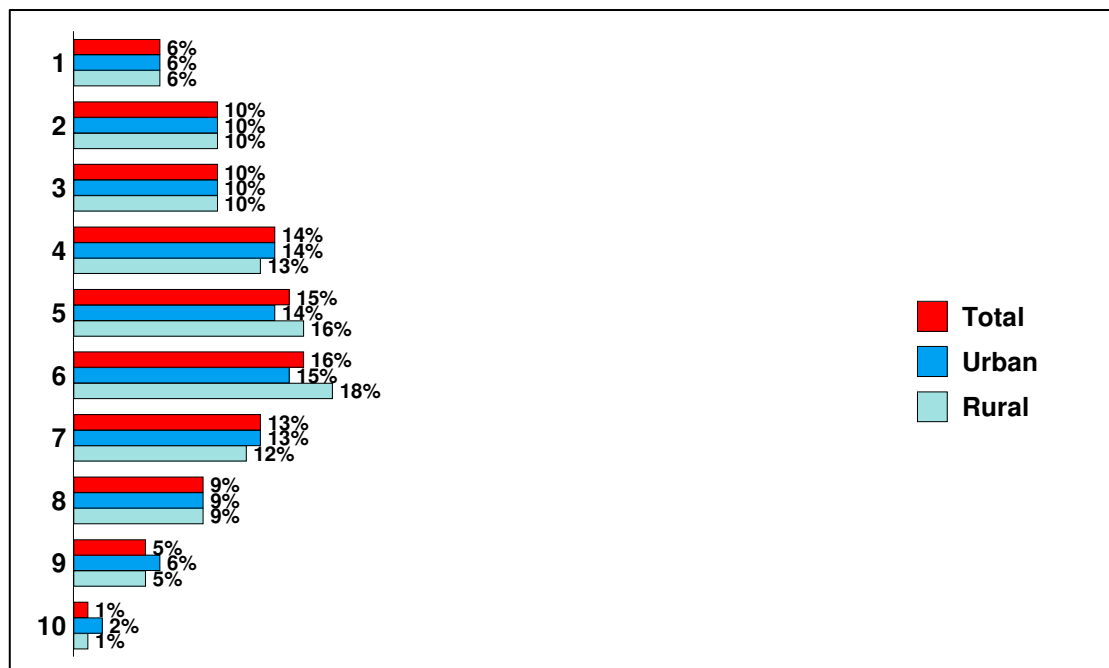
Priority given to violent crime: average ranking out of 10
(1 = most important, 10 = least important)



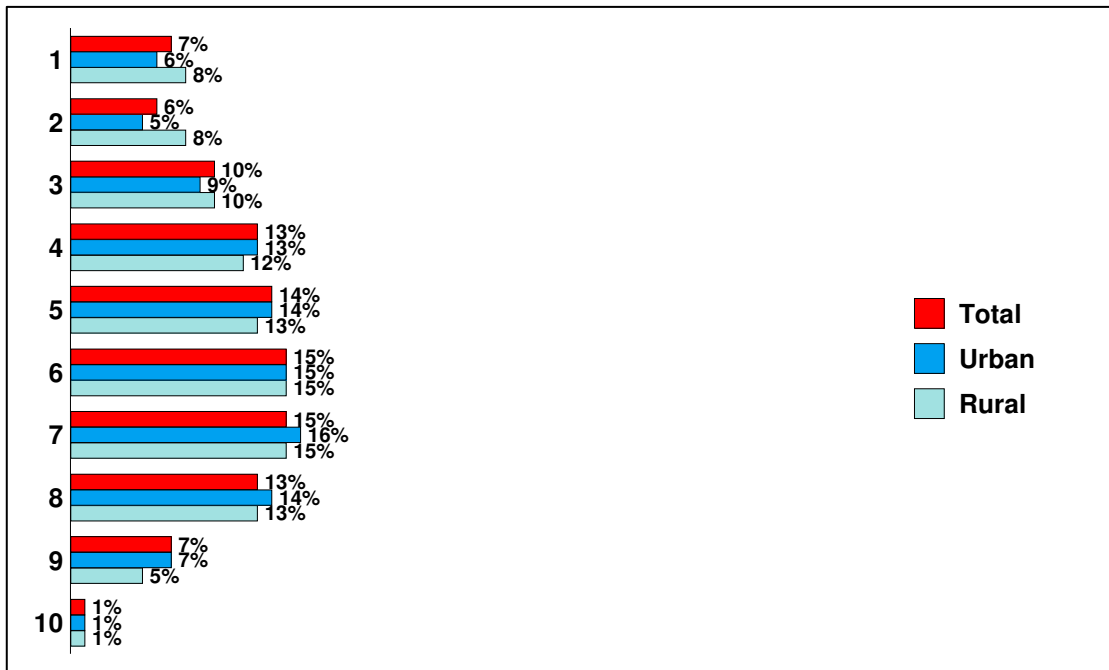
Priority given to theft/shoptlifting: average ranking out of 10
(1 = most important, 10 = least important)



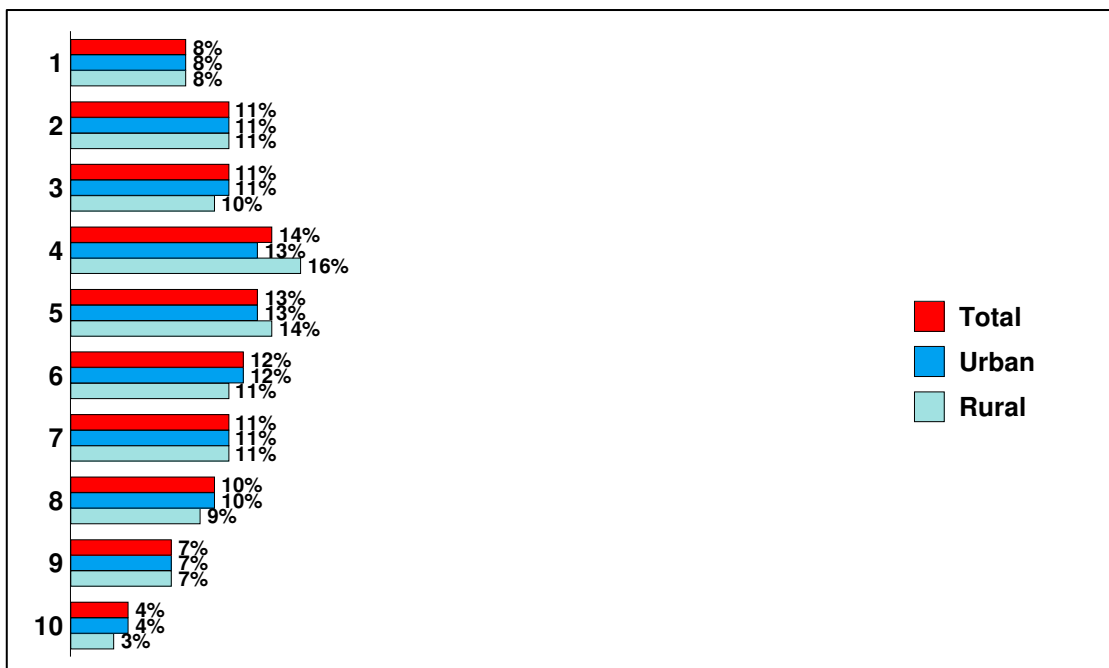
Priority given to car crime: average ranking out of 10
(1 = most important, 10 = least important)



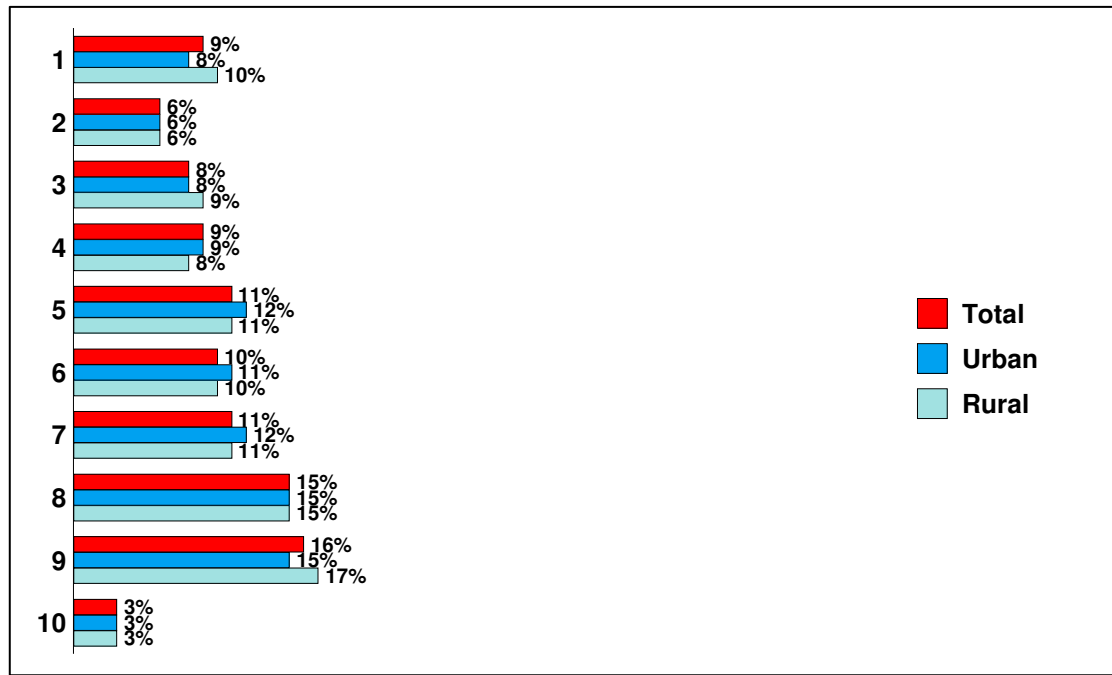
Priority given to drink driving: average ranking out of 10
(1 = most important, 10 = least important)



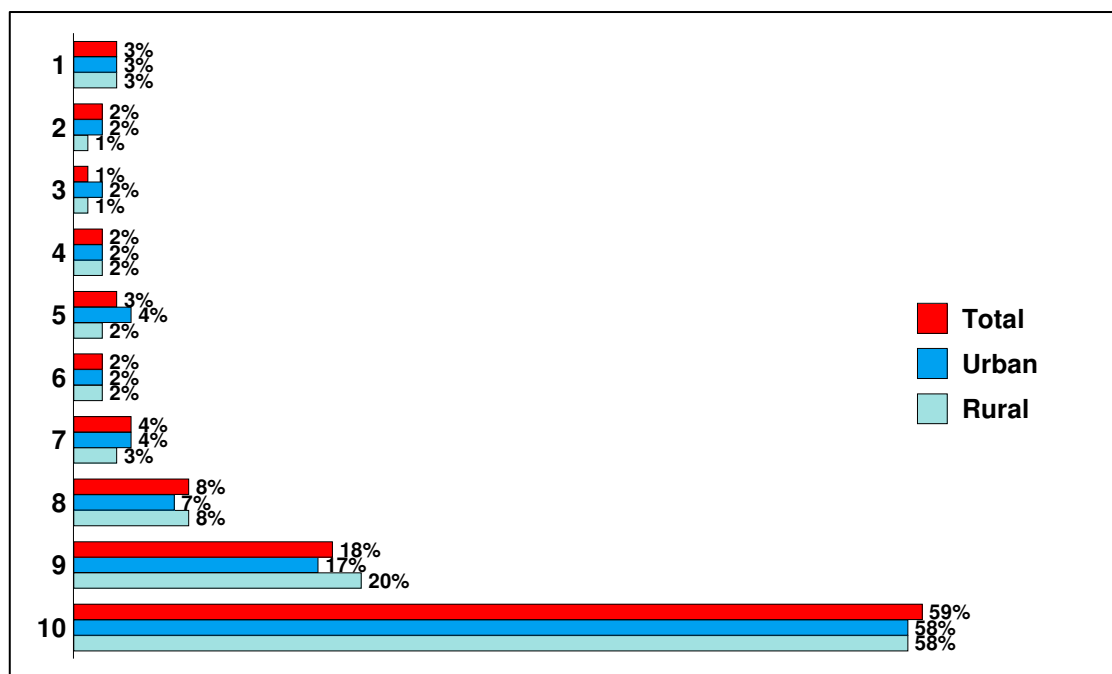
Priority given to drug taking: average ranking out of 10
(1 = most important, 10 = least important)



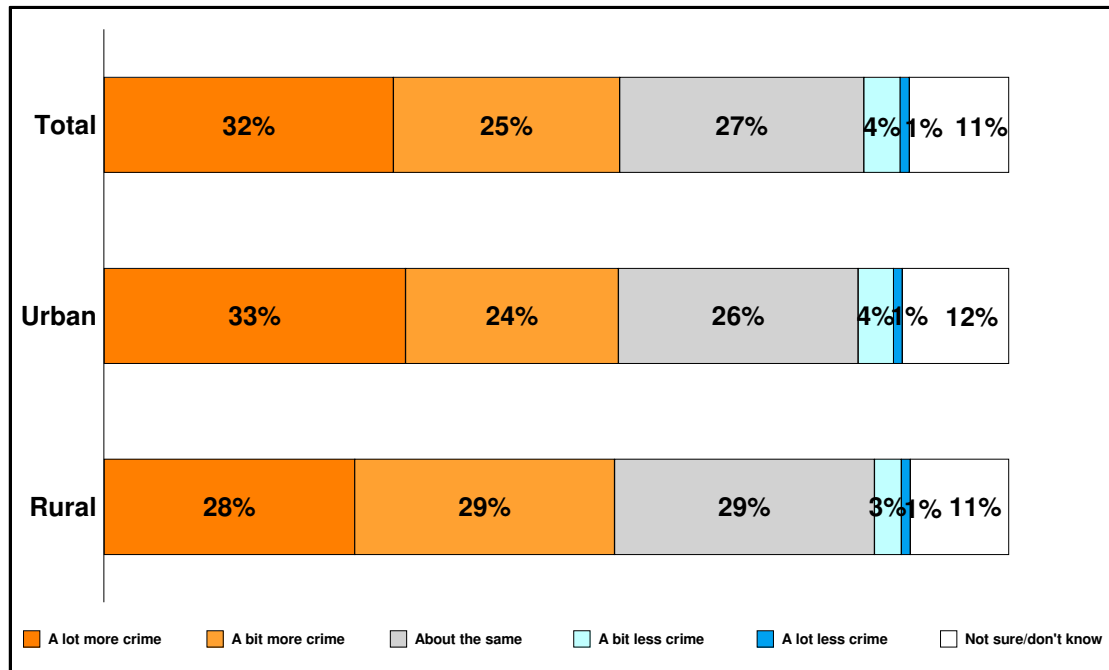
Priority given to vandalism/graffiti: average ranking out of 10 (1 = most important, 10 = least important)



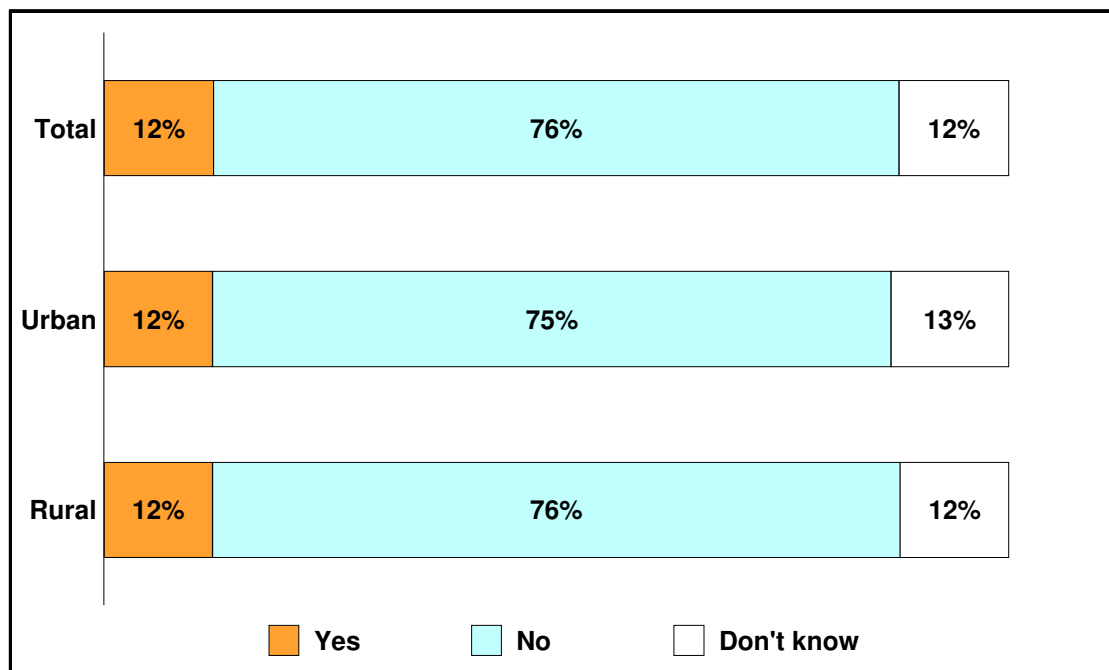
Priority given to neighbourhood disputes: average ranking out of 10 (1 = most important, 10 = least important)



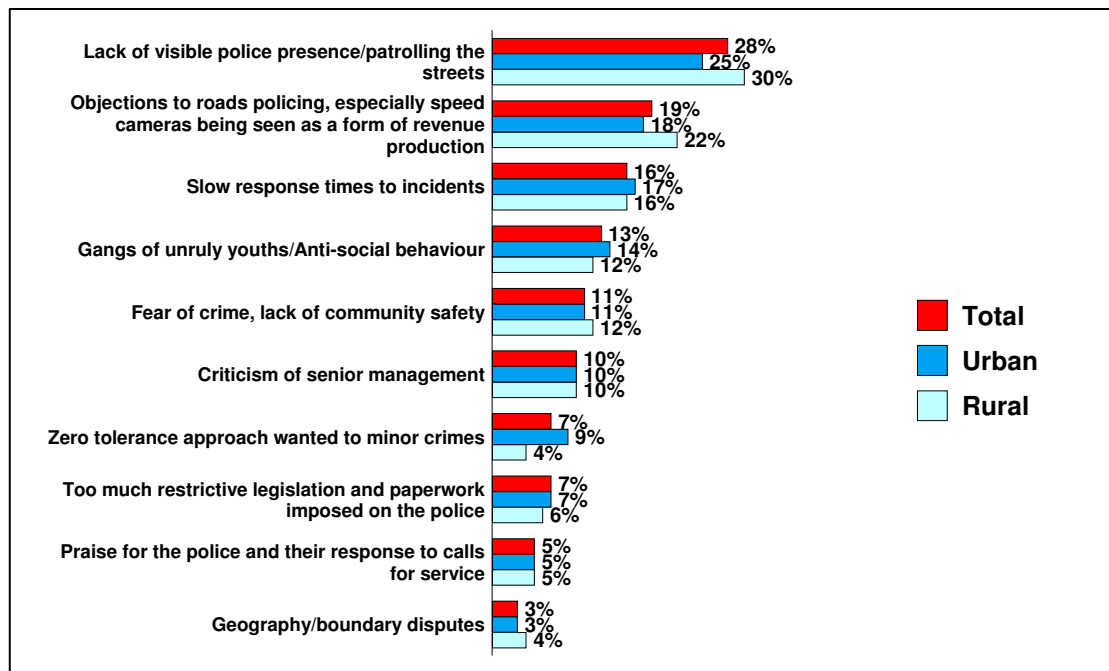
How would you say the level of crime has changed in your area over the last year?



Do you think Humberside Police are meeting your needs?



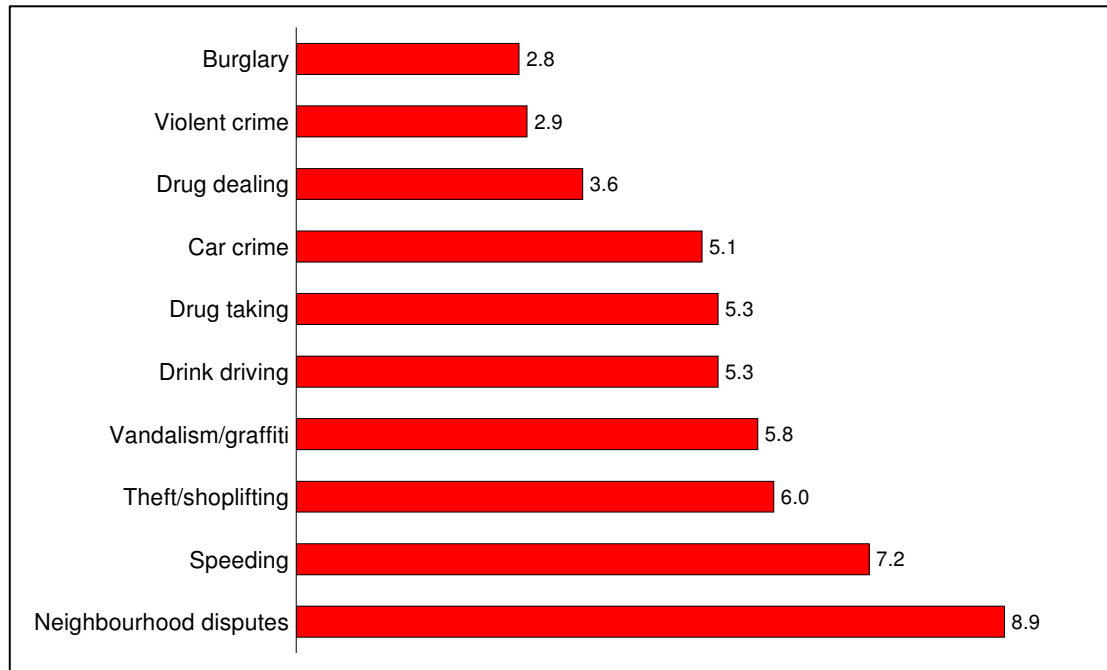
Please add any other comments you wish to make



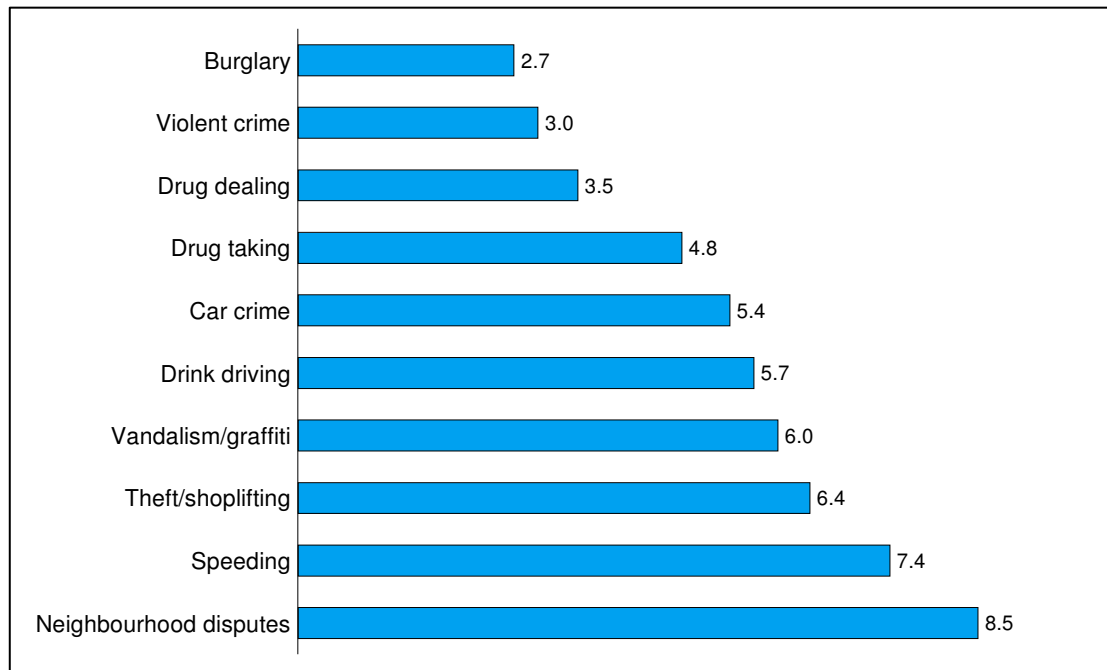
Analysis by Division

**Priority given to different issues: average ranking out of 10
(1 = most important, 10 = least important)**

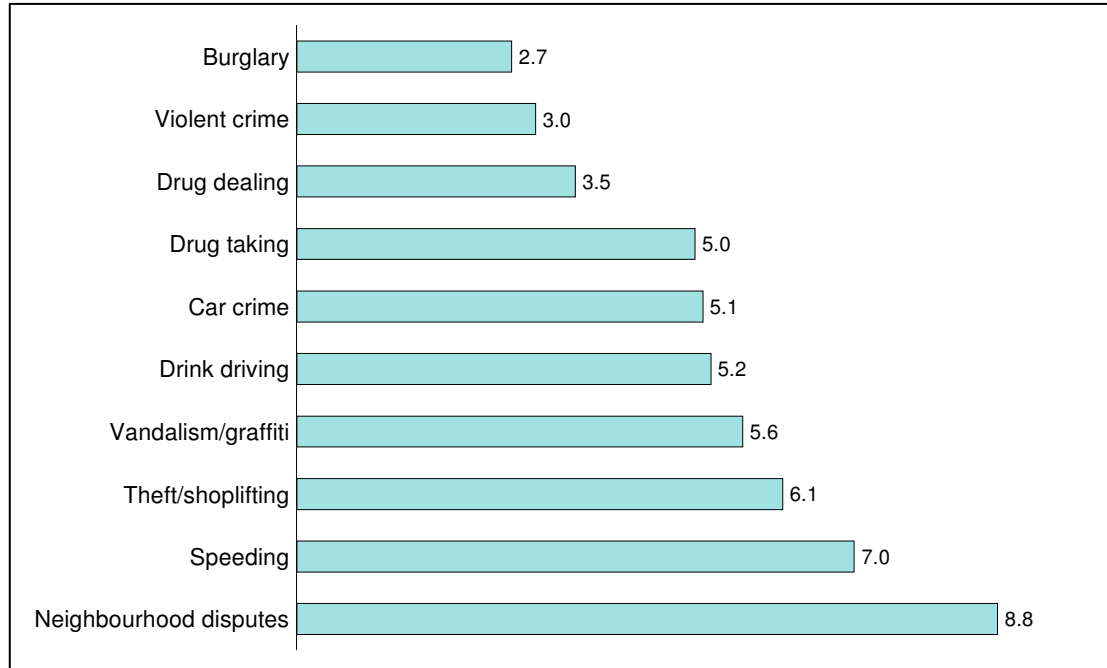
East Riding:



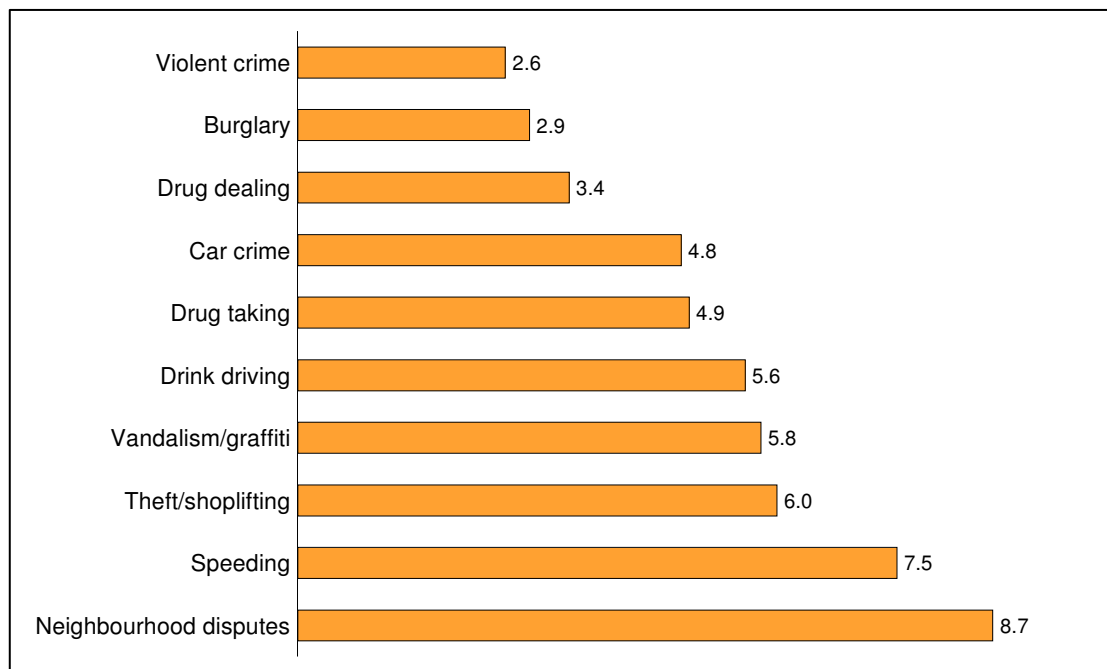
Hull:



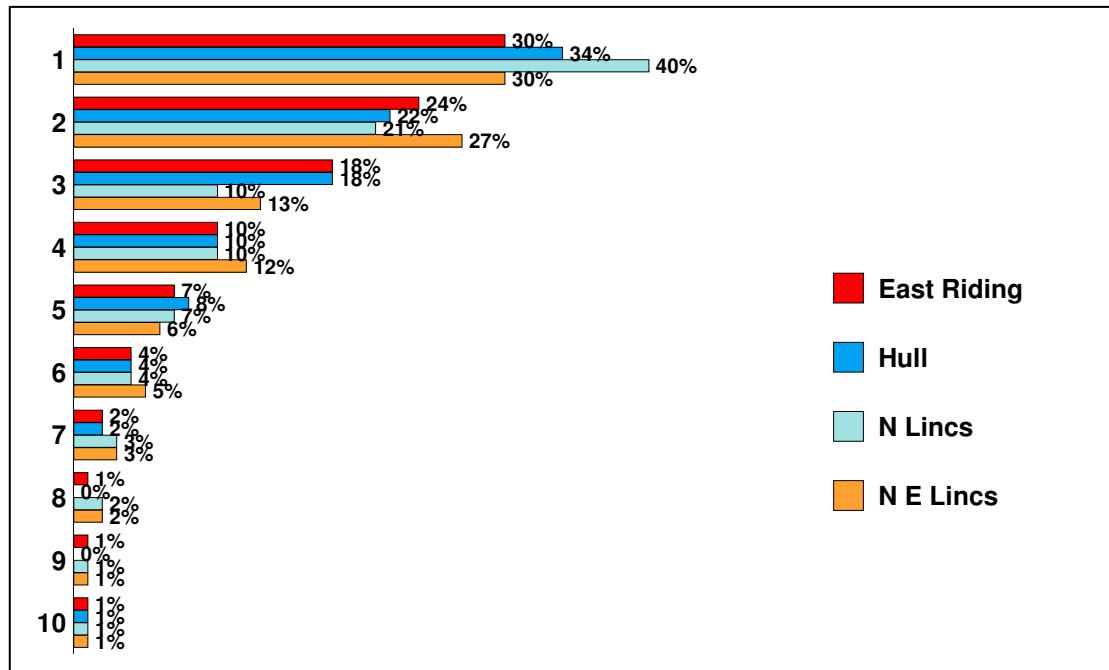
N Lincs:



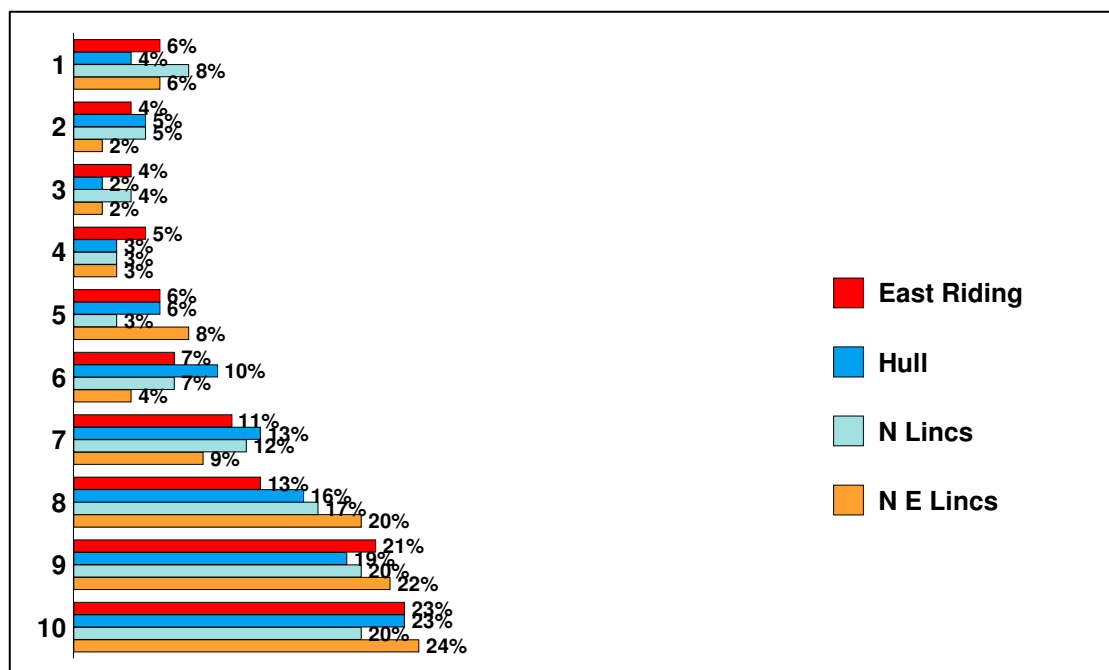
N E Lincs:



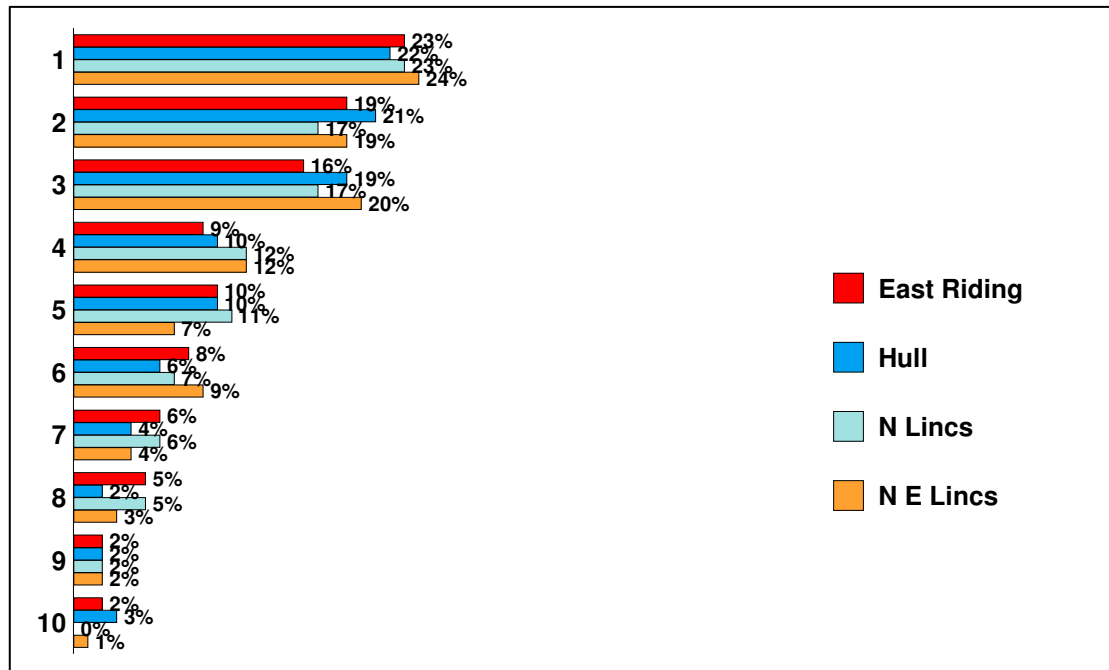
Priority given to burglary: average ranking out of 10
(1 = most important, 10 = least important)



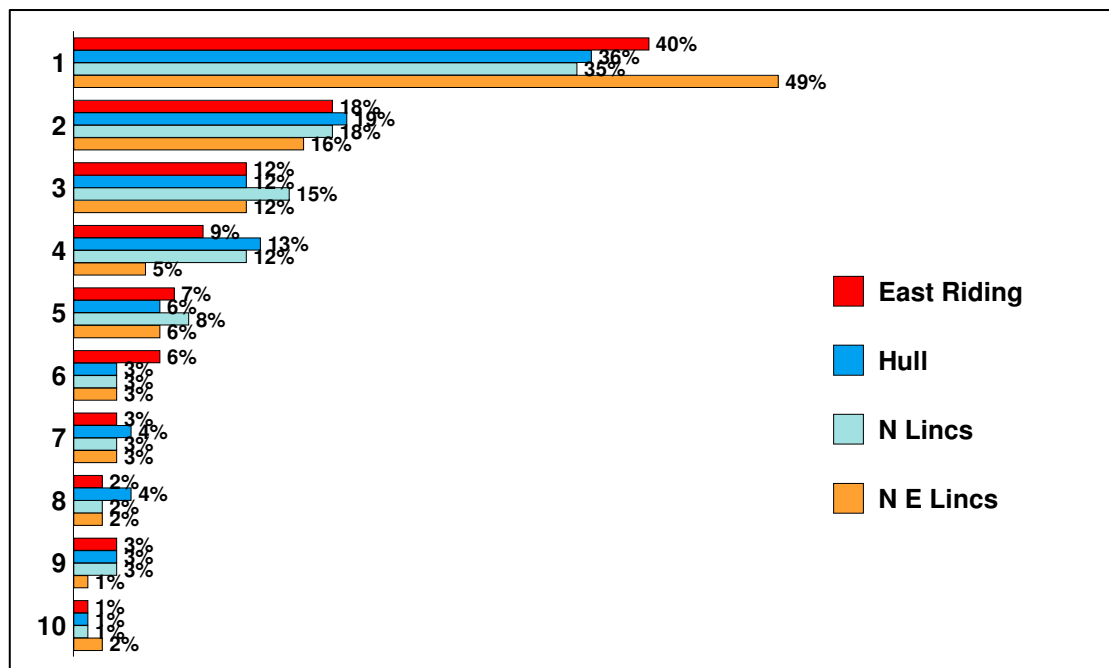
Priority given to speeding: average ranking out of 10
(1 = most important, 10 = least important)



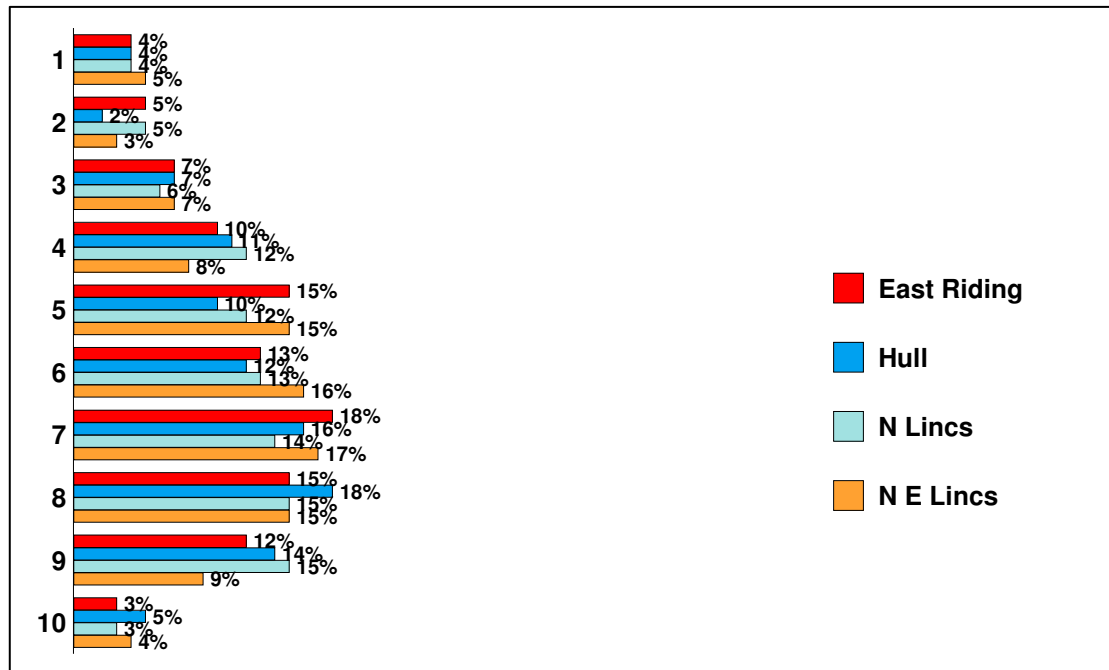
Priority given to drug dealing: average ranking out of 10
(1 = most important, 10 = least important)



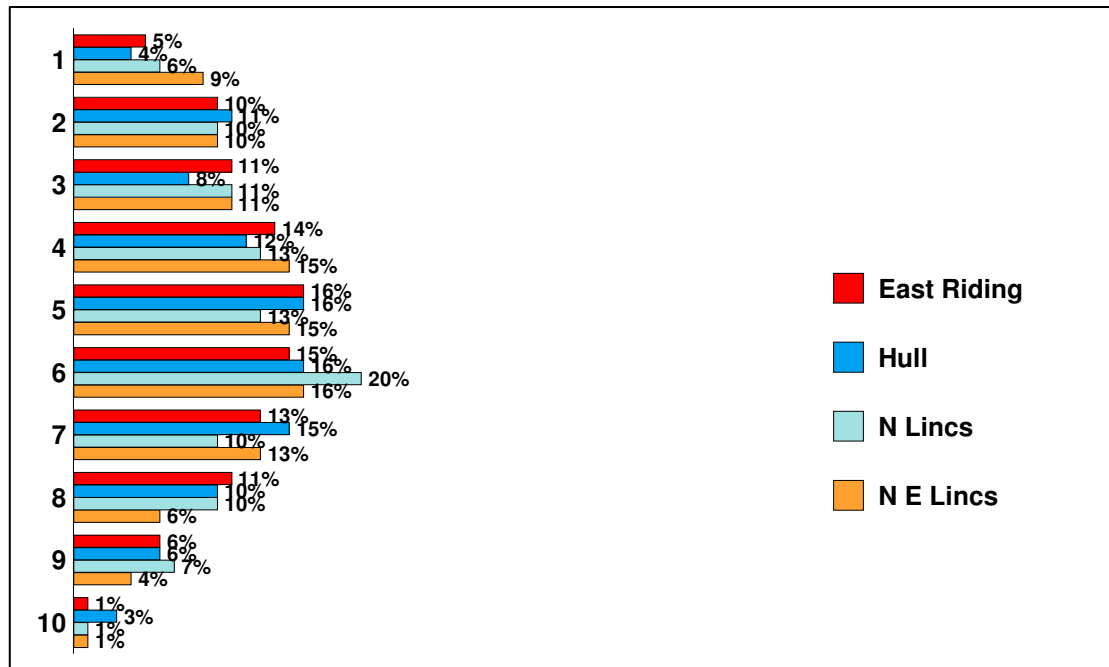
Priority given to violent crime: average ranking out of 10
(1 = most important, 10 = least important)



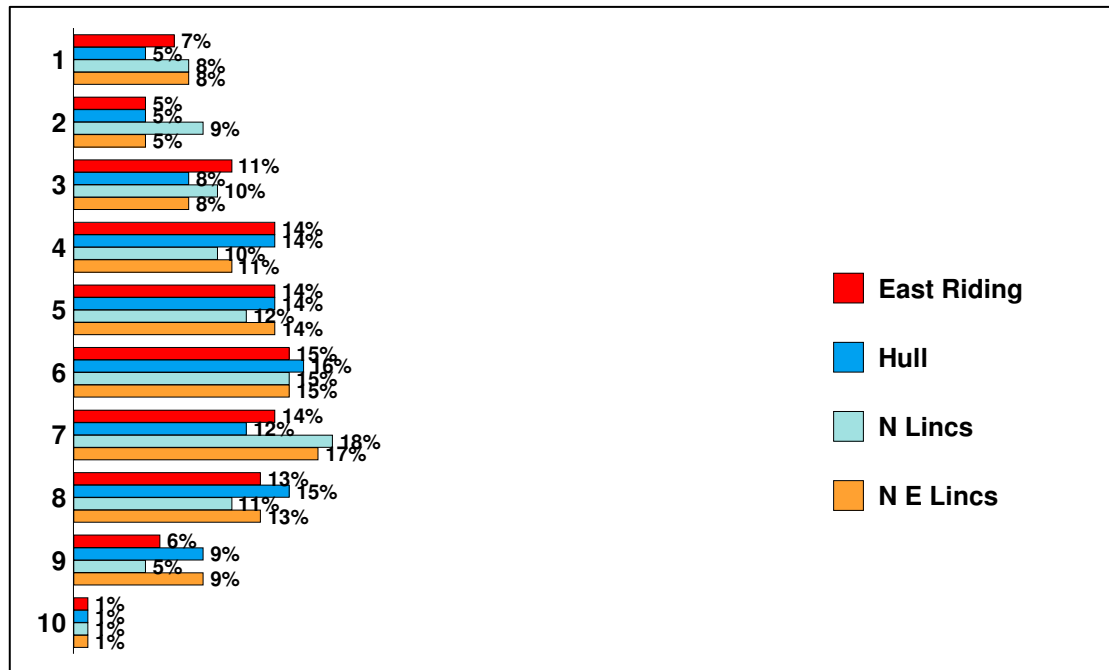
**Priority given to theft/shoptlifting: average ranking out of 10
(1 = most important, 10 = least important)**



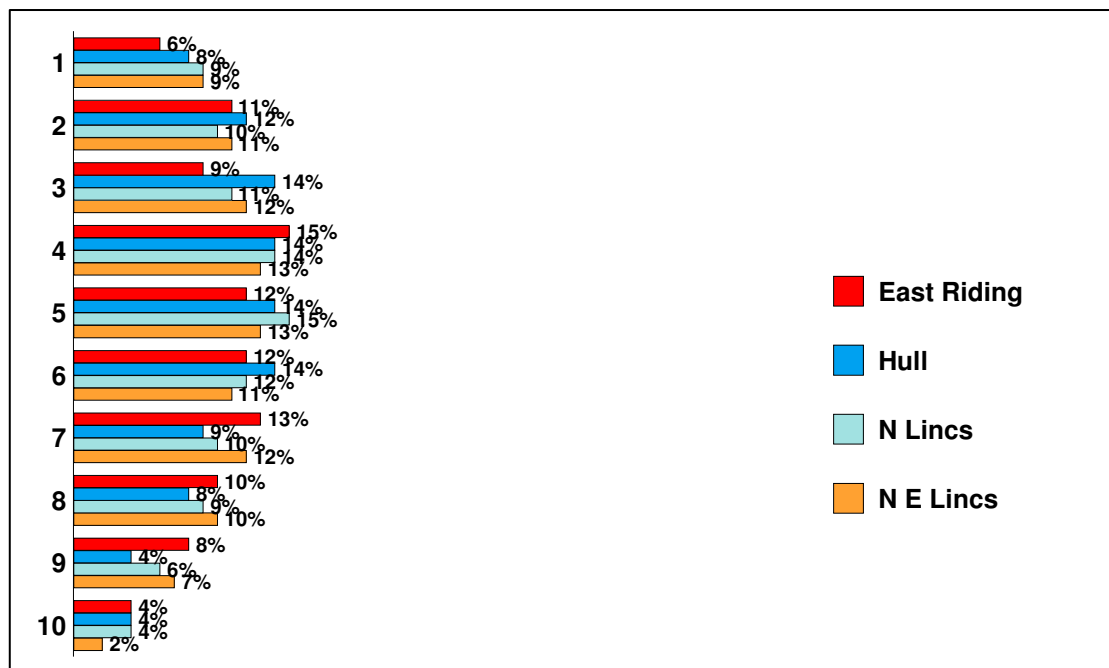
**Priority given to car crime: average ranking out of 10
(1 = most important, 10 = least important)**



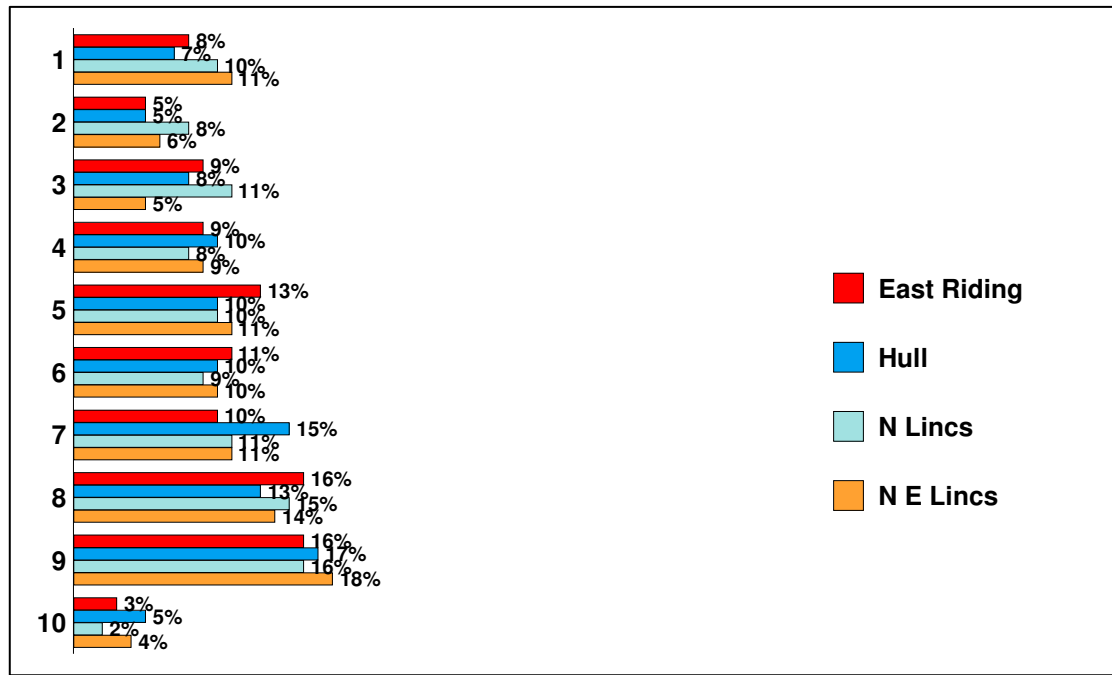
Priority given to drink driving: average ranking out of 10
(1 = most important, 10 = least important)



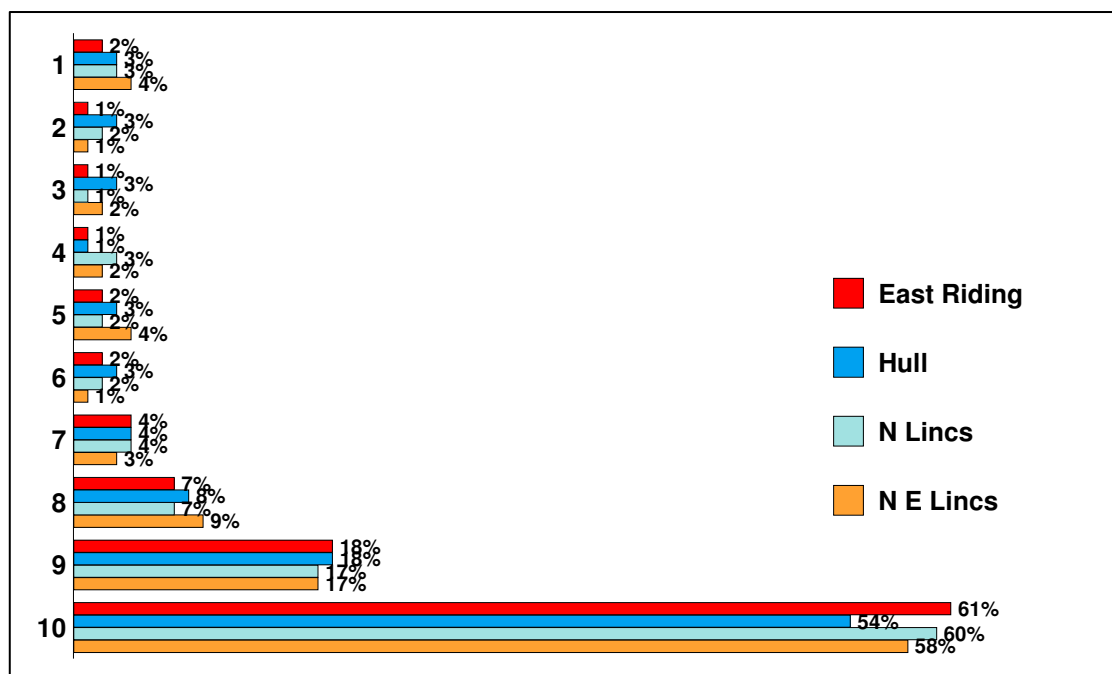
Priority given to drug taking: average ranking out of 10
(1 = most important, 10 = least important)



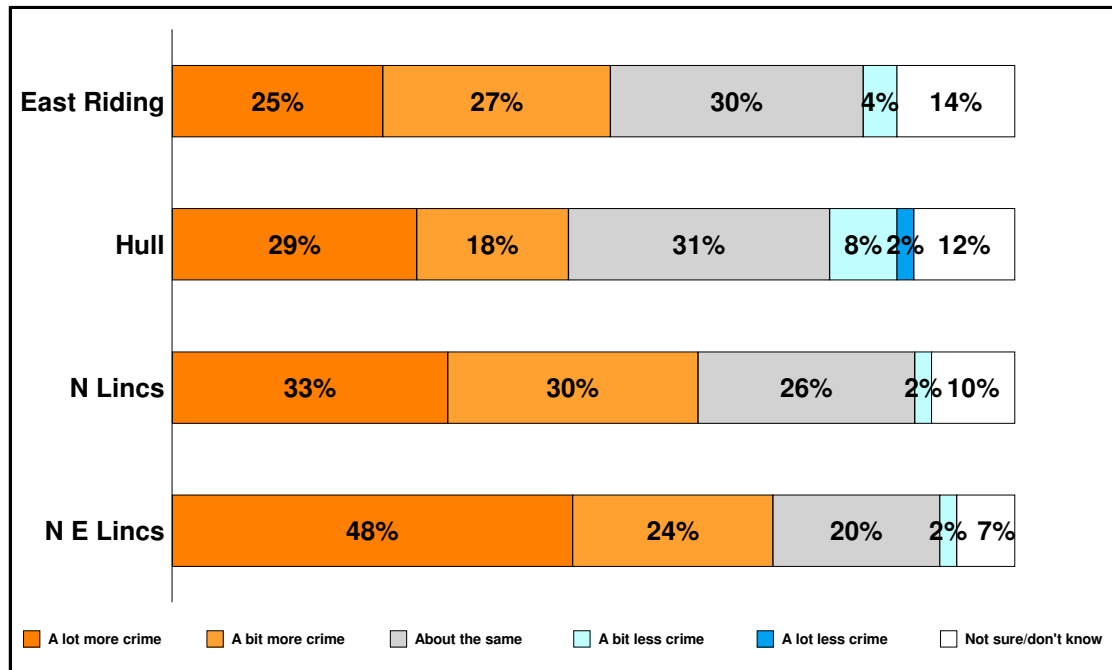
Priority given to vandalism/graffiti: average ranking out of 10 (1 = most important, 10 = least important)



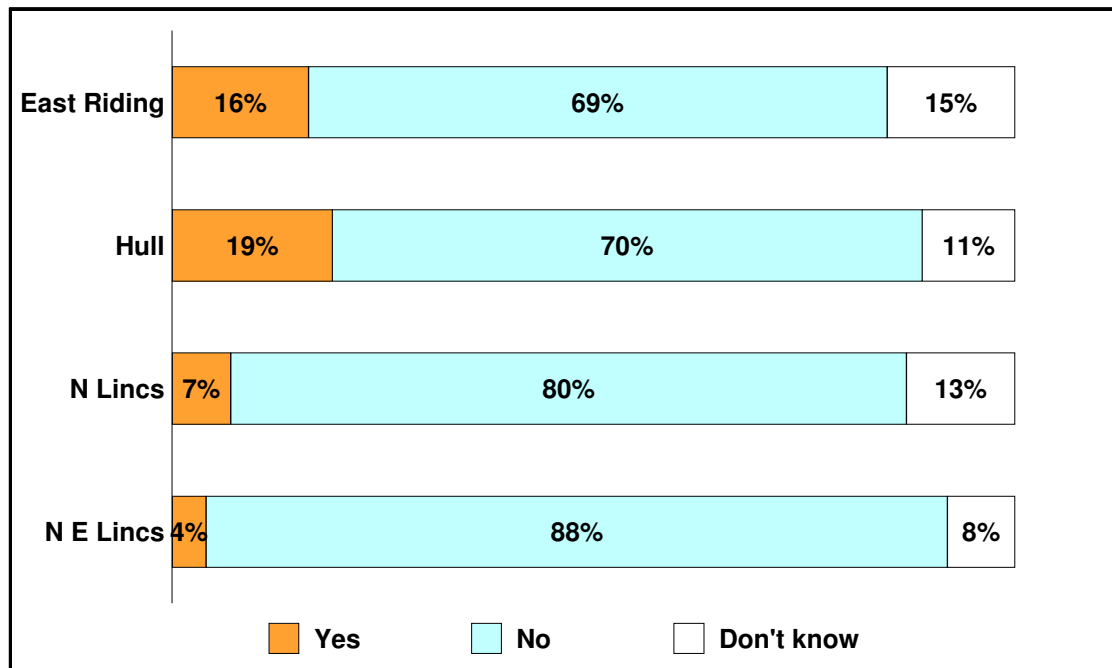
Priority given to neighbourhood disputes: average ranking out of 10 (1 = most important, 10 = least important)



How would you say the level of crime has changed in your area over the last year?



Do you think Humberside Police are meeting your needs?



Please add any other comments you wish to make

